

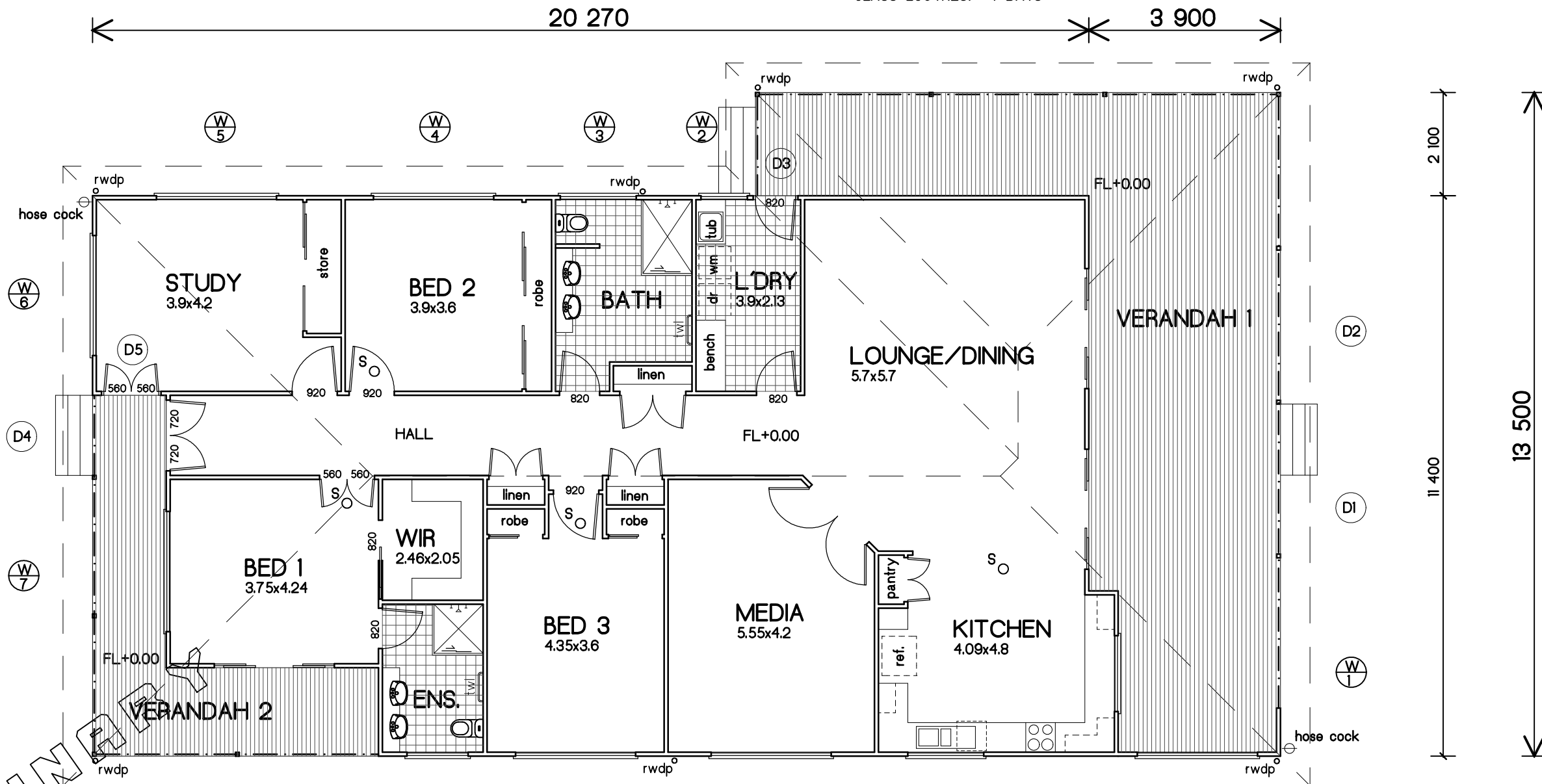
FLOOR AREA :	
INTERIOR LIVING	- 209.17 m <sup>2</sup>
VERANDAH 1	- 64.53 m <sup>2</sup>
VERANDAH 2	- 18.78 m <sup>2</sup>
<b>TOTAL</b>	<b>- 292.48 m<sup>2</sup></b>

WINDOW SCHEDULE

W1	900x1500 SLIDING GLASS WINDOW	W5	600x2400 SLIDING GLASS WINDOW	W9	1800x2400 SLIDING GLASS WINDOW
W2	900x900 SLIDING GLASS WINDOW	W6	1800x2400 SLIDING GLASS WINDOW	W10	1800x2400 SLIDING GLASS WINDOW
W3	900x1500 SLIDING GLASS WINDOW	W7	1800x2400 SLIDING GLASS WINDOW	W11	900x1500 SLIDING GLASS WINDOW
W4	1800x2400 SLIDING GLASS WINDOW	W8	600x1200 SLIDING GLASS WINDOW	W12	1211x600 152mm BREEZWAY GLASS LOUVRES. 4 BAYS

○ S 240 V SMOKE DETECTOR FIXED TO CEILING IN ACCORDANCE WITH BCA PART 3.7.2.3 SMOKE ALARM TO COMPLY WITH AS 3786

PROVIDE TEMPERATURE CONTROL DEVICE TO HOT WATER UNIT IN ACCORDANCE WITH A.S. 3500.4.2 1997



- D1 2100x2400 SLIDING GLASS DOOR
- D2 2100x2400 SLIDING GLASS DOOR
- D3 2040x820 SOLID CORE EXTERNAL LAUNDRY DOOR
- D4 DOUBLE 2040x720 SOLID CORE FEATURE ENTRY DOOR
- D5 DOUBLE 2040x560 SOLID CORE OFFICE ENTRY DOOR
- D6 2100x2400 SLIDING GLASS DOOR

CEILING FANS ARE TO BE INSTALLED TO ALL BEDrms. & LOUNGE/DINING AREAS, ASSISTING IN COMPLIANCE WITH Min. 6 STAR ENERGY RATING.

ENSURE ALL WET AREA FLOORS ARE SEALED & FALL TO FLOOR WASTES IN ACCORDANCE WITH B.C.A. 3.8.1.

HOT WATER SYSTEM TO OWNERS SPECIFICATION INSTALLED TO MANUFACTURER'S SPEC.

# FLOOR PLAN

**Homefab**  
Strong-smart-fast. Built to last.  
6 Slade Street - PO Box 665 Mareeba, Queensland 4880 Australia.  
ABN: 21 603 460 395. Phone: 07 4092 2369  
Fax: 07 4092 2355.  
Website: www.homefab.com.au  
Email: sales@homefab.com.au

**pd designs**  
building designers

P 07 4056 1883,  
F 07 4056 3595  
M 0427 561 883  
E info@pd designs.com.au  
96A gordon street, gordonvale, QLD. 4865  
lic. under QBCC Act 1991 - No. 1191543  
abr: 73 437 147 573  
ocr: 143 382 899

Use figured dimensions in preference to scale. Check all dimensions on site before fabrication or building work.

© These drawings and designs are Copyright

1: 100  
ON A3 SHEET

**PROPOSED  
3 BEDROOM DESIGN  
for:  
HOMEFAB**

NOVEMBER 2017

**2313**

WIND CLASSIFICATION

**W1**

OF ?

**C2**